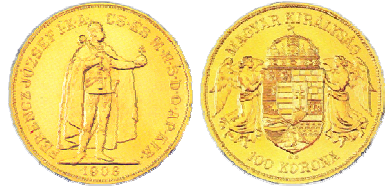


Korona

Year of Mintage:	1908
Purity:	0.900% / 21.6 karat Gold
Obverse:	Coronation of Franz Josef
Reverse:	Angels holding coat of arms



Notes:

Size	Face Value	Gross Weight	Fine Gold Content	Diameter	Thickness
.9802-Oz.	100 Koronas (1908 Restrike)	1.0891 Troy ounces (33.88 grams)	0.9802 Troy ounce (30.49 grams)	1.264 inches (37.00 millimeters)	
.1960-Oz.	20 Koronas (1908 Restrike)	.0218 Troy ounce (6.77 grams)	0.1960 Troy ounce (6.10 grams)	0.827 inch (21.00 millimeters)	